



A Matlab Toolbox for Parametric Identification of Radiation-Force Models of Ships and Offshore Structures

Tristan Perez^{1,3} Thor I. Fossen^{2,3}

¹Centre for Complex Dynamic Systems and Control (CDSC), The University of Newcastle, Callaghan, NSW-2308, AUSTRALIA. E-mail: Tristan.Perez@newcastle.edu.au

²Department of Engineering Cybernetics, Norwegian University of Science and Technology, N-7491 Trondheim, Norway. E-mail: Fossen@ieee.org

³Centre for Ships and Ocean Structures (CeSOS) Norwegian University of Science and Technology, N-7491 Trondheim, Norway.

Abstract

This article describes a Matlab toolbox for parametric identification of fluid-memory models associated with the radiation forces ships and offshore structures. Radiation forces are a key component of force-to-motion models used in simulators, motion control designs, and also for initial performance evaluation of wave-energy converters. The software described provides tools for preparing non-parametric data and for identification with automatic model-order detection. The identification problem is considered in the frequency domain.

Keywords: Frequency-Domain Identification, Models of Ships and Offshore Structures, Software.

1 Introduction

One approach to develop linear time-domain models of marine structures consists of using computed hydrodynamic data for system identification and obtain a parametric approximation of the Cummins equation. If either physical-model or full-scale experiments are available, then the mathematical model based on the Cummins equation can be corrected for viscous effects. These corrections can also be obtained from computational fluid dynamics. This procedure is illustrated in Figure 1.

A great deal of work has been reported in the literature on the use of different identification methods to approximate the fluid-memory models in the Cummins equation. [Taghipour et al. \(2008\)](#) and [Perez and Fossen \(2008b\)](#) provide an up-to-date review of the different

methods. In particular, the latter reference discusses the advantages of using frequency-domain methods for the identification of fluid-memory models. The data provided by hydrodynamic codes is in the frequency domain; therefore, frequency-domain identification is the natural approach to follow. This identification approach avoids transforming the data to the time domain, which, if not handled properly, can result in errors due to the finite amount of data. More importantly, frequency-domain identification allows enforcing model structure and parameter constraints. Therefore, the class of models over which the search is done is reduced, and the models obtained satisfy properties that are in agreement with the hydrodynamic modelling hypothesis. See [Perez and Fossen \(2008b\)](#) for further details.

In this article, we present a set of Matlab functions

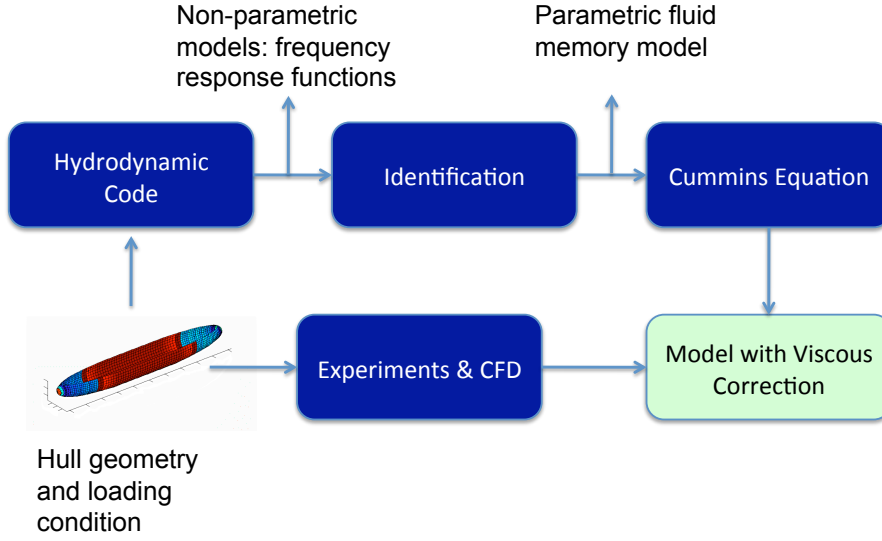


Figure 1: Hydrodynamic modelling procedure.

to perform parametric identification of fluid-memory models associated with the radiation forces of ships and offshore structures.

We address two cases. In the first case, the infinite-frequency added mass is considered available, and the fluid-memory model is estimated based on the frequency-dependent added mass (including the infinite-frequency value) and the frequency-dependent potential damping. In the second case, the infinite-frequency added mass is considered unavailable, and it is estimated together with the fluid-memory model. That is, the complete radiation-force model is estimated. For the second case, we follow the approach proposed by [Perez and Fossen \(2008a\)](#). The second case is relevant for data of hydrodynamic codes based on 2D-potential theory since these codes do not normally solve the boundary-value problem associated with the infinite frequency.

2 Dynamics of Ships and Offshore Structures

The linearised equation of motion of marine structures can be formulated as

$$\mathbf{M}_{RB} \ddot{\boldsymbol{\xi}} = \boldsymbol{\tau}. \quad (1)$$

The matrix \mathbf{M}_{RB} is the rigid-body generalised mass. The generalised-displacement vector $\boldsymbol{\xi} \triangleq [x, y, z, \phi, \theta, \psi]^T$ gives the position of the vessel with respect to an equilibrium frame (x -surge, y -sway, and z -heave) and the orientation in terms of Euler angles (ϕ -roll, θ -pitch, and ψ -yaw). The generalised force vector

$\boldsymbol{\tau} \triangleq [X, Y, Z, K, M, N]^T$ gives the respective forces in a body-fixed frame (X -surge, Y -sway, and Z -heave) and the moments about the axis of the body-fixed frame (K -roll, M -pitch, and N -yaw). This generalised-force vector can be separated into four components:

$$\boldsymbol{\tau} = \boldsymbol{\tau}_{rad} + \boldsymbol{\tau}_{visc} + \boldsymbol{\tau}_{res} + \boldsymbol{\tau}_{exc}. \quad (2)$$

The first component corresponds to the radiation forces arising from the change in momentum of the fluid due to the motion of the structure and the waves generated as the result of this motion. The second component corresponds to forces due to fluid-viscous effects (skin friction and vortex shedding). The third component corresponds to restoring forces due to gravity and buoyancy. The fourth component represents the excitation pressure forces due to the incoming waves and other forces used to control the motion of the vessel.

[Cummins \(1962\)](#) used potential theory (ideal fluid, no viscous effects) to study the radiation hydrodynamic problem in the time-domain, and found the following representation:

$$\boldsymbol{\tau}_{rad} = -\mathbf{A}_{\infty} \ddot{\boldsymbol{\xi}} - \int_0^t \mathbf{K}(t-t') \dot{\boldsymbol{\xi}}(t') dt'. \quad (3)$$

The first term in (3) represents pressure forces due the accelerations of the structure, and \mathbf{A}_{∞} is a constant positive-definite matrix called *infinite-frequency added mass*. The second term represents fluid-memory effects that capture the energy transfer from the motion of the structure to the radiated waves. The convolution term is known as a *fluid-memory model*. The kernel of the convolution term, $\mathbf{K}(t)$, is the matrix of *retardation* or *memory functions* (impulse responses).

By combining terms and adding the linearised restoring forces $\boldsymbol{\tau}_{res} = -\mathbf{G}\boldsymbol{\xi}$, the *Cummins Equation* (Cummins, 1962) is obtained:

$$(\mathbf{M}_{RB} + \mathbf{A}_\infty)\ddot{\boldsymbol{\xi}} + \int_0^t \mathbf{K}(t-t')\dot{\boldsymbol{\xi}}(t') dt' + \mathbf{G}\boldsymbol{\xi} = \boldsymbol{\tau}_{exc}, \quad (4)$$

Equation (4) describes the motion of ships and offshore structures in an ideal fluid provided the linearity assumption is satisfied. This model can then be embellished with non-linear components taking into account, for example, viscous effects and mooring lines—see Figure 1.

3 Frequency-domain Models

When the radiation forces (3) are considered in the frequency domain, they can be expressed as follows (Newman, 1977; Faltinsen, 1990):

$$\boldsymbol{\tau}_{rad}(j\omega) = -\mathbf{A}(\omega)\ddot{\boldsymbol{\xi}}(j\omega) - \mathbf{B}(\omega)\dot{\boldsymbol{\xi}}(j\omega). \quad (5)$$

The parameters $\mathbf{A}(\omega)$ and $\mathbf{B}(\omega)$ are the *frequency-dependent added mass* and *potential damping* respectively. This representation leads to the following frequency-domain relationship between the excitation forces and the displacements:

$$[-\omega^2[\mathbf{M} + \mathbf{A}(\omega)] + j\omega\mathbf{B}(\omega) + \mathbf{G}]\boldsymbol{\xi}(j\omega) = \boldsymbol{\tau}_{exc}(j\omega). \quad (6)$$

Ogilvie (1964) showed the relationship between the parameters of the time-domain model (4) and frequency-domain model (6) using the Fourier Transform of (4):

$$\mathbf{A}(\omega) = \mathbf{A}_\infty - \frac{1}{\omega} \int_0^\infty \mathbf{K}(t) \sin(\omega t) dt, \quad (7)$$

$$\mathbf{B}(\omega) = \int_0^\infty \mathbf{K}(t) \cos(\omega t) dt. \quad (8)$$

From expression (7) and the application of the Riemann-Lebesgue lemma, it follows that $\mathbf{A}_\infty = \lim_{\omega \rightarrow \infty} \mathbf{A}(\omega)$, and hence the name infinite-frequency added mass.

From the Fourier transform, it also follows the frequency-domain representation of the retardation functions:

$$\mathbf{K}(j\omega) = \mathbf{B}(\omega) + j\omega[\mathbf{A}(\omega) - \mathbf{A}_\infty]. \quad (9)$$

Expression (9) is key to generate data used in the identification problems that seek parametric approximations to the fluid memory term in (4).

Hydrodynamic codes based on potential theory, are nowadays readily available to compute $\mathbf{B}(\omega)$ and $\mathbf{A}(\omega)$

for a finite set of frequencies of interest—see, for example, Beck and Reed (2001) and Bertram (2004). Hydrodynamic codes based on 3D-potential theory usually solve, the boundary-value problem associated with infinite-frequency that gives \mathbf{A}_∞ , whereas codes based on 2D-potential theory do not normally solve this problem.

4 Identification of Radiation-force Models

To implement simulations models based on the Cummins equation (4), non-parametric fluid-memory models can be used. This method requires a discrete-time approximation of the convolution integral and saving enough past data to evaluate the convolution at each step of the simulation. This approach can be time consuming and may require significant amounts of computer memory as illustrated in Taghipour et al. (2008). In addition, the non-parametric models are not amicable to the analysis and design of vessel motion control systems.

One way to overcome these difficulties consists of approximating the fluid-memory models by a linear-time-invariant parametric model:

$$\boldsymbol{\mu} = \int_0^t \mathbf{K}(t-t')\dot{\boldsymbol{\xi}}(t') dt' \approx \begin{cases} \dot{\mathbf{x}} = \hat{\mathbf{A}}\mathbf{x} + \hat{\mathbf{B}}\dot{\boldsymbol{\xi}} \\ \hat{\boldsymbol{\mu}} = \hat{\mathbf{C}}\mathbf{x}, \end{cases} \quad (10)$$

where the number of components of the state vector \mathbf{x} corresponds to the order of the approximating system and the matrices $\hat{\mathbf{A}}$, $\hat{\mathbf{B}}$, and $\hat{\mathbf{C}}$ are constants. Note that the above state-space approximation does not have a feed-through term $\hat{\mathbf{D}}\dot{\boldsymbol{\xi}}$ in the output equation. The reason for this is that the mapping $\dot{\boldsymbol{\xi}} \mapsto \boldsymbol{\mu}$ has relative degree 1—see Perez and Fossen (2008b) and references therein.

The approximation problem (10) can be re-casted in the frequency domain:

$$\mathbf{K}(j\omega) \approx \hat{\mathbf{K}}(j\omega) = \hat{\mathbf{C}}(j\omega\mathbf{I} - \hat{\mathbf{A}})^{-1}\hat{\mathbf{B}}, \quad (11)$$

where $\hat{\mathbf{K}}(s)$ is matrix of rational transfer functions with entries

$$\hat{K}_{ik}(s) = \frac{P_{ik}(s)}{Q_{ik}(s)} = \frac{p_r s^r + p_{r-1} s^{r-1} + \dots + p_0}{s^n + q_{n-1} s^{n-1} + \dots + q_0}. \quad (12)$$

One can estimate the transfer functions $\hat{K}_{ik}(s)$ and then obtain the state-space model (10) via canonical realisations (Taghipour et al., 2008). The identification problem then focus on the transfer functions $\hat{K}_{ik}(s)$.

4.1 Identification when A_∞ is Available

This problem can be formulated in terms of Least-Squares (LS) fitting:

$$\boldsymbol{\theta}^* = \arg \min_{\boldsymbol{\theta}} \sum_l w_l \epsilon_l^* \epsilon_l, \quad (13)$$

$$\epsilon_l = K_{ik}(j\omega_l) - \hat{K}_{ik}(j\omega_l, \boldsymbol{\theta}) \quad (14)$$

where the notation * indicates transpose complex conjugate, and w_l are weighting coefficients. The non-parametric model $K_{ik}(j\omega_l)$ is computed via (9) using $A_{\infty,ik}$ and $A_{ik}(\omega_l)$ and $B_{ik}(\omega_l)$ for a for a given finite set of frequencies ω_l .

The structure of the estimate \hat{K}_{ik} is given by (12), and the vector of parameters $\boldsymbol{\theta}$ can be taken as

$$\boldsymbol{\theta} = [p_r, \dots, p_0, q_{n-1}, \dots, q_0]^T. \quad (15)$$

From hydrodynamic properties of the model under study, it follows that the problem (13)-(14) must be considered subject to the following constraints (Perez and Fossen, 2008b):

$$\hat{K}_{ik}(s) \text{ has a zero at } s = 0, \quad (16)$$

$$\hat{K}_{ik}(s) \text{ has relative degree 1,} \quad (17)$$

$$\hat{K}_{ik}(s) \text{ is stable,} \quad (18)$$

$$\hat{K}_{ik}(s) \text{ is positive real for } i = k. \quad (19)$$

The optimisation problem (13)-(14) is non-linear. Two methods can be followed to solve this problem:

1. Linearise (13)-(14), and solve a sequence of linear LS problems using the solution of the previous iteration to compute the weighting coefficients w_l .
2. Use the solution of the linear problem to initialise a Gauss-Newton search algorithm.

The linearisation of (13)-(14) is due to (Levy, 1959) and the iterative solution via a sequence of linear problems is due to (Sanathanan and Koerner, 1963):

$$\hat{\boldsymbol{\theta}}_p = \arg \min_{\boldsymbol{\theta}} \sum_l s_{l,p} |Q_{ik}(j\omega_l, \boldsymbol{\theta})K_{ik}(j\omega_l) - P_{ik}(j\omega_l, \boldsymbol{\theta})|^2, \quad (20)$$

where

$$s_{l,p} = \frac{1}{|Q_{ik}(j\omega_l, \hat{\boldsymbol{\theta}}_{p-1})|^2}.$$

Note that (20) results in a Linear LS minimization. After a few iterations (usually $p=10$ to 20), $Q_{ik}(j\omega_l, \boldsymbol{\theta}_p) \approx Q_{ik}(j\omega_l, \boldsymbol{\theta}_{p-1})$; and therefore, the problem (13)-(14) is approximately recovered. This allows solving the nonlinear LS problem via iterations on linear LS problems.

4.2 Order Selection

With respect to the order selection of the approximation, it follows from the constraints (16)-(19) that the minimum order transfer function that can be considered has the following form:

$$\hat{K}_{ik}^{\min}(s) = \frac{p_1 s}{s^2 + q_1 s + q_0}. \quad (21)$$

Therefore, for automatic order determination, one can start with the lowest-order approximation (21) and increase the order to improve the fitting until a satisfactory approximation is obtained (Unneland and Perez, 2007).

As a metric for determining the quality of the fit, one can use the coefficient of determination for both added mass and damping. This coefficient is defined as

$$R^2 = 1 = \frac{\sum_k (X_k - \hat{X}_k)^2}{\sum_k (X_k - \bar{X})^2}, \quad 0 \leq R^2 \leq 1 \quad (22)$$

where X_k are the data points and \hat{X}_k are the estimates. The coefficient R^2 is interpreted as the fraction of the data that is explained by the regression model.

The steps for automatic-order detection can then be as follows:

- (i) Obtain the parametric model (12).
- (ii) Reconstruct the added mass and damping from the real and imaginary parts of the estimate (12), that is,

$$\hat{A}_{ik}(\omega) = \text{Im}\{\omega^{-1} \hat{K}_{ik}(j\omega)\} + A_{\infty,ik} \quad (23)$$

$$\hat{B}_{ik}(\omega) = \text{Re}\{\hat{K}_{ik}(j\omega)\}, \quad (24)$$

- (iii) Compute the corresponding coefficients of determination for added mass and damping. If either of these coefficients is below 0.99, then the model order is increased, and the procedure is repeated from step (i). Otherwise, stop.

4.3 Stability

The resulting model from the LS problem (13)-(14) may not necessarily be stable because stability is not enforced as a constraint in the optimisation. This can be addressed in a sub-optimal manner. Should the obtained model be unstable, one could obtain a stable one by reflecting the unstable poles about the imaginary axis and re-computing the denominator polynomial. That is,

- (i) Compute the roots of $\lambda_1, \dots, \lambda_n$ of $Q_{ik}(s, \hat{\boldsymbol{\theta}}_{ik})$.

(ii) If $\text{Re}\{\lambda_i\} > 0$, then set $\text{Re}\{\lambda_i\} = -\text{Re}\{\lambda_i\}$,

(iii) Reconstruct the polynomial:

$$Q_{ik}(s) = (s - \lambda_1)(s - \lambda_2) \cdots (s - \lambda_n).$$

4.4 Passivity

The mapping $\dot{\xi}$ into a force introduced by the fluid-memory convolution is passive—see [Perez and Fossen \(2008b\)](#) and references therein. The frequency-response-LS-fitting problem (13)-(14) does not enforce passivity. If passivity is required (i.e., $B_{ik}(\omega) > 0$), a simple way to ensure it is to try different order approximations and choose the one that is passive. The approximation is passive if

$$\text{Re} \left\{ \frac{P_{ik}(j\omega_l, \boldsymbol{\theta})}{Q_{ik}(j\omega_l, \boldsymbol{\theta})} \right\} > 0. \quad (25)$$

When this is checked, one should evaluate the transfer function at low and high frequencies—below and above the frequencies used for the parameter estimation.

Often, low-order approximations models given by the solution of (13)-(14) are passive—the term ‘low’ depends on the data of the particular vessel under consideration. Therefore, one can reduce the order and trade-off fitting accuracy for passivity.

4.5 Identification when \mathbf{A}_∞ is Unavailable

If the infinite-frequency added mass matrix \mathbf{A}_∞ is unavailable, one cannot form $\mathbf{K}(j\omega)$ as indicated in (9). In this case, the method proposed by [Perez and Fossen \(2008a\)](#) can be followed and estimate jointly the infinite-frequency added mass and the fluid-memory transfer function. The method exploits the knowledge and procedures used in the identification of $\hat{K}_{ik}(s)$ when the infinite-frequency added mass is considered available. Therefore, it provides an extension of those results putting the two identification problems into the same framework.

On the one hand, the radiation forces in the frequency-domain given in (5) can be expressed

$$\tau_{rad,i}(j\omega) = - \left[\frac{B_{ik}(\omega)}{j\omega} + A_{ik}(\omega) \right] \ddot{\xi}_k(s), \quad (26)$$

where the expression in brackets gives the complex coefficient

$$A_{ik}(j\omega) \triangleq \frac{B_{ik}(\omega)}{j\omega} + A_{ik}(\omega). \quad (27)$$

On the other hand, taking the Laplace transform of (3), and assuming a rational approximation for the convolution term we obtain

$$\hat{\tau}_{rad,i}(s) = - \left[A_{\infty,ik} s + \frac{P_{ik}(s)}{Q_{ik}(s)} \right] \dot{\xi}_k(s), \quad (28)$$

$$= - \left[A_{\infty,ik} + \frac{P'_{ik}(s)}{Q_{ik}(s)} \right] \ddot{\xi}_k(s) \quad (29)$$

The transfer function in brackets in (29) can be further expressed as

$$\hat{A}_{ik}(s) = \frac{R_{ik}(s)}{S_{ik}(s)} = \frac{A_{\infty,ik} Q_{ik}(s) + P'_{ik}(s)}{Q_{ik}(s)}. \quad (30)$$

Thus, we can use LS optimisation to estimate the parameters of the approximation (30) given the frequency-response data (27):

$$\boldsymbol{\theta}^* = \arg \min_{\boldsymbol{\theta}} \sum_l w_l (\epsilon_l^* \epsilon_l), \quad (31)$$

with

$$\epsilon_l = A_{ik}(j\omega_l) - \frac{R_{ik}(j\omega_l, \boldsymbol{\theta})}{Q_{ik}(j\omega_l, \boldsymbol{\theta})}, \quad (32)$$

and the constraint that $n = \deg R_{ik}(s) = \deg Q_{ik}(s)$. As already mentioned in the previous section, the minimum order approximation is $n = 2$. Therefore, we can start with this order and increase it to improve the fit if necessary. Hence, we can use the same algorithms that we use for the case when the infinite-frequency added mass is available, subject to different order constraints and interpretation of the estimates obtained.

If the polynomial $Q_{ik}(s)$ is normalised to be monic, then

$$\hat{A}_{\infty,ik} = \lim_{\omega \rightarrow \infty} \frac{R_{ik}(s, \boldsymbol{\theta}^*)}{S_{ik}(s, \boldsymbol{\theta}^*)}. \quad (33)$$

That is, the infinite-frequency added mass $A_{\infty,ik}$ is the coefficient of the highest order term of $R_{ik}(s, \boldsymbol{\theta}^*)$. Also, after obtaining $R_{ik}(s, \boldsymbol{\theta}^*)$ and $S_{ik}(s, \boldsymbol{\theta}^*)$, we can recover the polynomials for the fluid-memory model:

$$\begin{aligned} Q_{ik}(s, \boldsymbol{\theta}^*) &= S_{ik}(s, \boldsymbol{\theta}^*), \\ P_{ik}(s, \boldsymbol{\theta}^*) &= R_{ik}(s, \boldsymbol{\theta}^*) - \hat{A}_{\infty,ik} S_{ik}(s, \boldsymbol{\theta}^*). \end{aligned} \quad (34)$$

5 Toolbox Description

The toolbox presented in this paper is an independent component of the Marine Systems Simulator ([MSS, 2009](#)). Figure 2 shows a diagram of the different software components of the toolbox and their dependability. The main function of the toolbox is `FDIRadMod.m`, which processes the input data and returns the estimate of the fluid-memory transfer function and also the infinite-frequency added mass if required. This function calls other functions to prepare the data for

identification and to compute the estimates. The toolbox also includes two demos which show how to use the main function. The first demo considers the estimation with infinite-frequency added mass available (WA), and the second demo considers the estimation when infinite-frequency added mass is not available (NA).

The functionality of the main components is described in the following.

5.1 FDIRadMod.m

Purpose: This function processes the input hydrodynamic data and estimates the order and the parameters of a transfer function approximation of the fluid-memory model. The function processes only single-input-single-output models. Hence, for a multiple degree of freedom vessel or marine structure, this function should be used for each relevant coupling i, k .

Syntax:

```
[KrNum, KrDen, Ainf_hat] =
FDIRadMod(W, A, Ainf, B, FDIopt, Dof)
```

Input Data:

- W – Vector of frequencies.
- A – Vector of frequency-dependent added mass.
- $Ainf$ – Infinite-frequency added mass.
- B – Vector of frequency-dependent potential damping.
- $FDIopt$ – Structure with computation options.
- $Dof = [i, k]$ – Coupling of degrees of freedom (this is used to label the plots).

The structure $FDIopt$ has the following fields:

- $FDIopt.OrdMax$ – Maximum order to be used in automatic order detection. Typical value 20.
- $FDIopt.AinfFlag$ – Logic flag. If set to 1, the value $Ainf$ is used in the calculations. If set to 0, the infinite-frequency added mass is estimated, and the value in the argument of the function is ignored.
- $FDIopt.Method$ – This refers to the methods used to solve the parameter optimisation problem. If set to 1, a linearised model is used and a linear LS problem is solved. If set to 2, an iterative linear LS problem is solved. If set to 3, the linear LS solution is used to initialise a nonlinear LS problem, which is solved using the Gauss-Newton method.

The option value 2 gives a good trade-off between computational speed and accuracy.

- $FDIopt.Iterations$ – Maximum number of iterations to be used in the iterative linear LS solution.
- $FDIopt.PlotFlag$ – Logic flag. If set to 1, it plots the identification results corresponding to each iteration of auto order detection identification process. A typical value is 0.
- $FDIopt.LogLin$ – Logic flag. If set to 1, all the data is plotted in logarithmic scale and the magnitude of the transfer functions in dB. If set to 0, all the data is plotted in linear scale.
- $FDIopt.wsFactor$ – This is a sampling factor for plotting the data of the parametric approximation. The sample frequency used to plot the data is this factor times the minimum difference of frequencies in the input vector W . A typical value is 0.1.
- $FDIopt.wminFactor$ – The minimum frequency to be used in the plots is $FDIopt.wminFactor * Wmin$, where $Wmin$ is the minimum frequency of the dataset used for identification. Typical value 0.1.
- $FDIopt.wmaxFactor$ – The maximum frequency to be used in the plots is $FDIopt.wmaxFactor * Wmax$, where $Wmax$ is the maximum frequency of the dataset used for identification. Typical value 2 to 5.

Output Data:

- $KrNum, KrDen$ – Vectors with the numerator and denominator coefficients of the estimated single-input-single-output transfer function.
- $Ainf_hat$ – Estimate of the infinite-frequency added mass coefficient. If the option $FDIopt.AinfFlag$ is set to 1, then $Ainf_hat = Ainf$, which is part of the input data. If the option $FDIopt.AinfFlag$ is set to 0, the input value $Ainf$ is ignored and estimated, so the user can enter any value in the function argument.

Description: The function `FDIRadMod.m` first calls `EditAB.m` to prepare the data for identification. Then, depending on the option $FDIopt.AinfFlag$, the function calls the appropriate computation routine—see Figure 2.

The function `FDIRadMod.m` also makes an automatic order estimate by increasing the order of the approximation and computing the coefficient

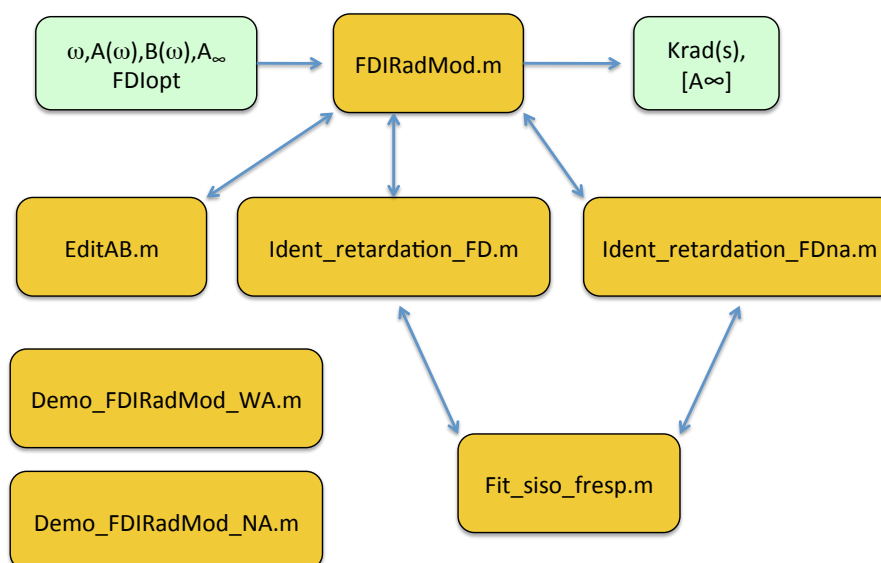


Figure 2: Frequency-domain Identification of Radiation Models (FDIRadMod): Software organisation and dependency.

of determination related to the fitting of both added mass and damping. When both these coefficients reach a value greater or equal to 0.99, the function stops increasing the order, and the reconstructed added mass and damping are plotted together with the non-parametric data used for identification. At this point, the function prompts the user to either adjust the order of the approximation manually via a keyboard input or leave the model as it is and exit the function. The user can make as many changes in order as required, and every time there is a change in the order, the model is re-estimated and the data re-plotted.

5.2 EditAB.m

Purpose: This function allows the user to select the frequency range to be used for identification and to eliminate data wild points¹.

Description: This is a support function for FDIRadMod.m, so the user may not need to call it directly. The function first plots the added mass and potential damping as a function of the frequency, and then prompts the user to select the range of frequencies for identification. This range selection is done by clicking with the mouse on the plot of either the added mass or

damping. The low-frequency data point should be selected first, then the high-frequency point, and finally the user should press the return key. The data is then re-plotted within the selected range.

After selecting the frequency range, the function allows the elimination of data wild points. A message on the workspace prompts the user to opt for wild point elimination. If required, this elimination is done by clicking with the mouse on all the points that are to be eliminated (either on the plot of the added mass or damping), and finally the user should press the return key. The function allows the user to re-start the process in case a point is deleted accidentally.

5.3 Ident_retardation_FD.m

Purpose: This function estimates the parameters of a specified order approximation for the fluid-memory transfer function given the frequency response $K(j\omega_l)$.

Description: This is a support function for FDIRadMod.m, so the user may not need to call it directly. This function performs the estimation for the problem in which the infinite frequency added mass is available to compute $K(j\omega_l)$. This problem is described in Section 4.1. The function performs data scaling and enforces the model structure constraints (16)–(19). A summary of the algorithm is given

¹Wild points in the data computed using hydrodynamic codes are due to ill-conditioned numerical problems, which often arise at high-frequencies if inappropriate panel sizes are used to discretise the hull—see Faltinsen (1990) for details.

in the Appendix.

5.4 Ident_retardation_FDna.m

Purpose: This function performs the joint parameter estimation of the approximating fluid-memory transfer function and the infinite-frequency added mass coefficient.

Description: This is a support function for `FDIRadMod.m`, so the user may not need to call it directly. The function uses as input the frequency-dependant added mass and damping, and it requires a desired order. The associated estimation problem is described in Section 4.5. The function performs data scaling and enforces the model structure constraints (16)–(19).

5.5 Fit_asis_fresp.m

Purpose: This is a general purpose function to estimate a single-input-single-output transfer function of a specified order and relative degree given a frequency response.

This function can be used not only to identify fluid-memory transfer functions, but also force-to-motion transfer functions (Perez and Lande, 2006). That latter is a functionality that will be included in future versions of the toolbox.

Description: This is a support function for `Ident_retardation_FD.m` and `Ident_retardation_FDna.m`, so the user may not need to call it directly. This function implements 3 methods for parameter estimation, namely, 1 - uses a linearised model and linear LS optimisation, 2 - uses iterative linear LS optimisation, 3- uses the linear LS optimisation solution to initialise a non-linear LS optimisation problem solved using the Gauss-Newton method. The function is built upon the functionality `invfreqs.m` of Matlab's Signal Processing Toolbox.

6 Demos

The toolbox provides two demo files that make use of the main function `FDIRadMod.m`—see Figure 2. These demos are based on the data of a FPSO that belongs to the Hydro add in of the Marine Systems Simulator (MSS, 2009).

The first demo, `Demo_FDIRadMod_WA.m` (WA—with infinite-frequency Added mass), loads the data structure `vessel`, and allows the user to select the desired coupling (i, k) for identification. The structure `vessel`

contains data corresponding to 6 degrees of freedom, that is, $i, k = 1, \dots, 6$. In this section, we illustrate the estimation results on the models corresponding to vertical motion modes; that is, couplings 3-3, 3-5, 5-3, and 5-5.

Figure 3 shows the raw added mass and damping for coupling 5-3, which by symmetry of the hull it is the same as the 3-5 coupling. These data are obtained from a hydrodynamic code. Figure 4 shows the edited data after eliminating some wild points. Figure 5 shows the corresponding curve fitting results. This figure shows the fitting of the fluid-memory frequency response on the left-hand side and the re-construction of added mass and damping based on the estimated model on the right-hand side. The order of the approximation is 5, which is obtained automatically by the function. Figures 6 and 7 show the corresponding results for the 3-3 and 5-5 couplings. For both these couplings the automatic order detection selected order 3, but then we manually increase the order to 4 to improve the fit.

The second demo, `Demo_FDIRadMod_NA.m` (NA—No infinite-frequency Added mass), also loads the data structure `vessel` of the FPSO, and allows the user to select the desired coupling for identification. In this demo, however, the identification is done without using the infinite-frequency added mass coefficient. Figure 8 shows the fitting results for the coupling 5-3. The left-hand-side plots show the fitting of the complex coefficient $\tilde{A}(j\omega)$ given by (27), whereas the right-hand-side plots show the re-construction of added mass and damping based on the estimated model. Figure 9 shows the estimated fluid-memory frequency response function. These results are in agreement with those shown in Figure 5; however, there are small differences due to the fact that the two estimators use different information.

It is worthwhile highlighting that the removal of wild points could be very important. For example, Figures 10 and 11 show the results of identification without using added mass for the coupling 5-3 when the wild points in the added mass and damping have not been removed. In this case, the automatic order detection selected an approximation of order 10. This is because the algorithm tries to fit lightly-damped complex poles to the wild points. The function gives the user the option to manually reduce the order. However, for some cases this may not solve the problem, and the identification process should be started again and remove the wild points.

7 Dependence on Other Matlab Toolboxes

The toolbox presented in this paper is based on standard Matlab code, except for two specific functions that belong to the Signal Processing Toolbox, namely, `freqs.m` and `invfreqs.m`.

The function `freqs.m` computes the frequency response of a transfer function model for a specified set of frequencies. The function `invfreqs.m` performs the parameter estimation using either the linear LS method or the Gauss-Newton method. In order to implement the iterative linear LS method, this function is called recursively by `fit_siso_fresp.m`.

If the user does not have a licence for the Signal Processing Toolbox, the two functions used should be coded by the user. An alternative to the function `freqs.m` is very simple to code. The algorithm given in the Appendix can be used as a guide to implement an alternative to `invfreqs.m`.

8 Software Repository

The toolbox presented in this paper is an independent component of the Marine Systems Simulator (MSS, 2009) maintained by the authors. This is a free toolbox released under a GNU licence. The software is available at www.marinecontrol.org

9 Conclusion

This paper describes a toolbox for parametric identification of fluid-memory models associated with the radiation forces of marine structures based on a frequency-domain method. The models identified find application in the development of ship simulators, control design, and the evaluation of wave energy converters.

The software described provides tools for preparing the non-parametric data generated hydrodynamic codes, automatic model order detection, and parameter estimation. The toolbox contains a main function that performs all these tasks by calling other support functions. The user may only need to call the main function.

The identification is done for single-input-single-output models. This gives the user freedom to select the couplings of interest each particular application and to integrate the functionality of the toolbox into other data processing codes.

Acknowledgments

The work presented in this paper has been sponsored by Australian Research Council, through the Centre for Complex Dynamic Systems and Control at the The University of Newcastle, Australia, and by the Norwegian Research Council through the Centre for Ships and Ocean Structures at NTNU, Norway.

References

- Beck, R. and Reed, A. Modern computational methods for ships in a seaway. *SNAME Transactions*, 2001. 109:1–51.
- Bertram, V. *Practical Ship Hydrodynamics*. Butterworth Heinemann, 2004.
- Cummins, W. The impulse response function and ship motion. Technical Report 1661, David Taylor Model Basin–DTNSRDC, 1962.
- Faltinsen, O. *Sea Loads on Ships and Offshore Structures*. Cambridge University Press, 1990.
- Levy, E. Complex curve fitting. *IRE Trans. Autom. Control*, 1959. AC-4:37–43.
- MSS. Marine Systems Simulator. Viewed 7 September 2009, <http://www.marinecontrol.org>, 2009.
- Newman, J. *Marine Hydrodynamics*. MIT Press, 1977.
- Ogilvie, T. Recent progress towards the understanding and prediction of ship motions. In *6th Symposium on Naval Hydrodynamics*. 1964 .
- Perez, T. and Fossen, T. Joint identification of infinite-frequency added mass and fluid-memory models of marine structures. *Modeling Identification and Control, published by The Norwegian Society of Automatic Control.*, 2008a. 29(3):93–102, doi:10.4173/mic.2008.1.1.
- Perez, T. and Fossen, T. I. Time-domain vs. frequency-domain identification of parametric radiation force models for marine structures at zero speed. *Modeling Identification and Control, published by The Norwegian Society of Automatic Control.*, 2008b. 29(1):1–19, doi:10.4173/mic.2008.3.2.
- Perez, T. and Lande, Ø. A frequency-domain approach to modelling and identification of the force to motion vessel response. In *Proc. of 7th IFAC Conference on Manoeuvring and Control of marine Craft, Lisbon, Portugal*. 2006 .

Sanathanan, C. and Koerner, J. Transfer function synthesis as a ratio of two complex polynomials. *IEEE Trans. of Autom. Control*, 1963.

Taghipour, R., Perez, T., and Moan, T. Hybrid frequency–time domain models for dynamic response analysis of marine structures. *Ocean Engineering*, 2008. doi:10.1016/j.oceaneng.2007.11.002.

Unneland, K. and Perez, T. MIMO and SISO identification of radiation force terms for models of marine structures in waves. In *IFAC Conference on Control Applications in Marine Systems (CAMS)*. Bol, Croatia, Sept. 2007 .

7. Estimate the added-mass and damping based on the identified parametric approximation via

$$\hat{A}_{ik}(\omega) = \text{Im}\{\omega^{-1} \hat{K}_{ik}(j\omega)\} + A_{\infty,ik} \quad (39)$$

$$\hat{B}_{ik}(\omega) = \text{Re}\{\hat{K}_{ik}(j\omega)\}, \quad (40)$$

and compare with the $A_{ik}(\omega)$ and $B_{ik}(\omega)$ given by the hydrodynamic code. If the fitting is not satisfactory increase the order of the approximation and go back to step (iii).

8. Check for passivity if required $\hat{B}_{ik}(j\omega) > 0$.

A Parameter Estimation Algorithm

This section presents the main steps of a parameter estimation algorithm for the case where the infinite-frequency added mass coefficients are used in the identification.

1. Set the appropriate range of frequencies where the hydrodynamic data is considered accurate, eliminate wild points, and compute the frequency response for a set of frequencies ω_l :

$$K_{ik}(j\omega_l) = B_{ik}(\omega_l) - j\omega_l(A_{ik}(\omega_l) - A_{\infty,ik}). \quad (35)$$

2. Scale the data:

$$K'_{ik}(j\omega_l) = \alpha K_{ik}(j\omega_l), \quad \alpha \triangleq \frac{1}{\max |K_{ik}(j\omega_l)|}. \quad (36)$$

3. Select the order of the approximation $n = \deg(Q_{ik}(j\omega, \theta_{ik}))$. The minimum order approximation is $n=2$, which can be the starting point for automatic-order selection.

4. Estimate the parameters

$$\theta_{ik}^* = \arg \min_{\theta} \sum_l \left| \frac{K'_{ik}(j\omega_l)}{(j\omega_l)} - \frac{P'_{ik}(j\omega_l, \theta)}{Q_{ik}(j\omega_l, \theta)} \right|^2, \quad (37)$$

with $\deg(P'_{ik}(j\omega, \theta_{ik})) = n - 2$. This problem can be linearised and solved iteratively as in (20).

5. Check stability by computing the roots of $Q_{ik}(j\omega, \theta_{ik}^*)$ and change the real part of those roots with positive real part.
6. Construct the desired transfer function by scaling and incorporate the s factor in the numerator:

$$\hat{K}_{ik}(s) = \frac{1}{\alpha} \frac{s P'_{ik}(s, \theta_{ik}^*)}{Q_{ik}(s, \theta_{ik}^*)}. \quad (38)$$

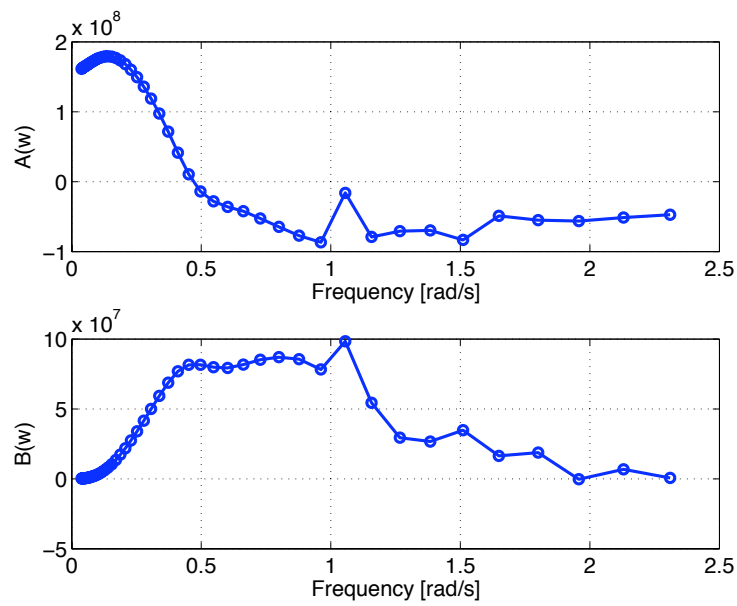


Figure 3: Raw added mass and damping data of a FPSO vessel computed by a hydrodynamic code. Coupling 5-3 (pitch-heave).

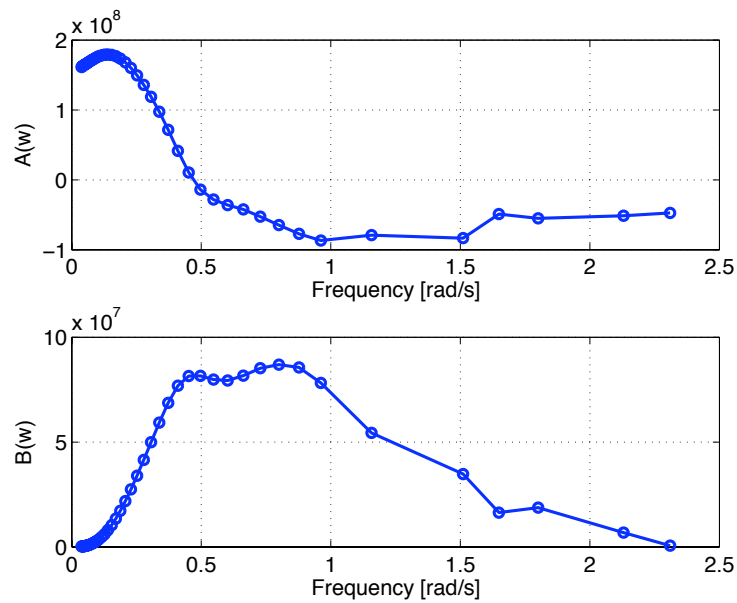


Figure 4: Added mass and damping of a FPSO vessel after eliminating wildpoints. Coupling 5-3 (pitch-heave).

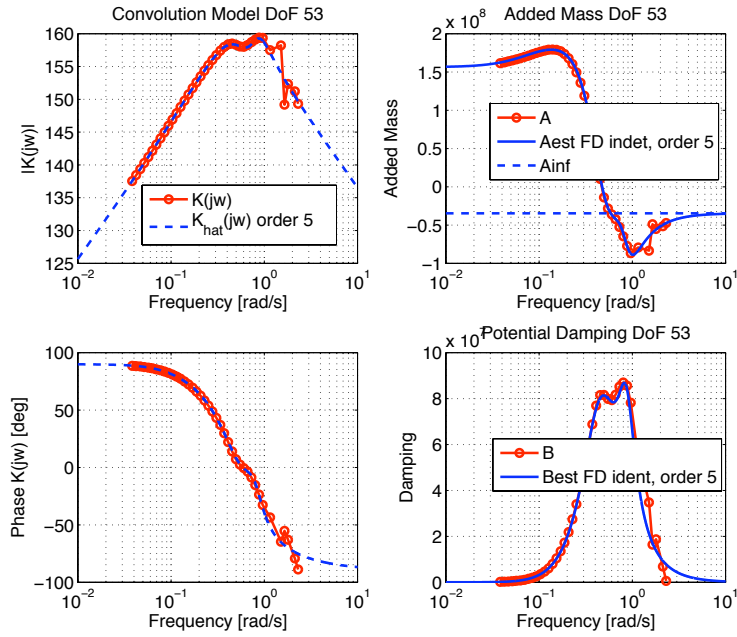


Figure 5: Identification results for the coupling 5-3 (pitch-heave) using information of the infinite-frequency added mass. The left-hand-side plots show the fluid-memory frequency response data and the response of the identified model. The right-hand-side plots show the added mass and potential damping and their re-construction from the estimated model.

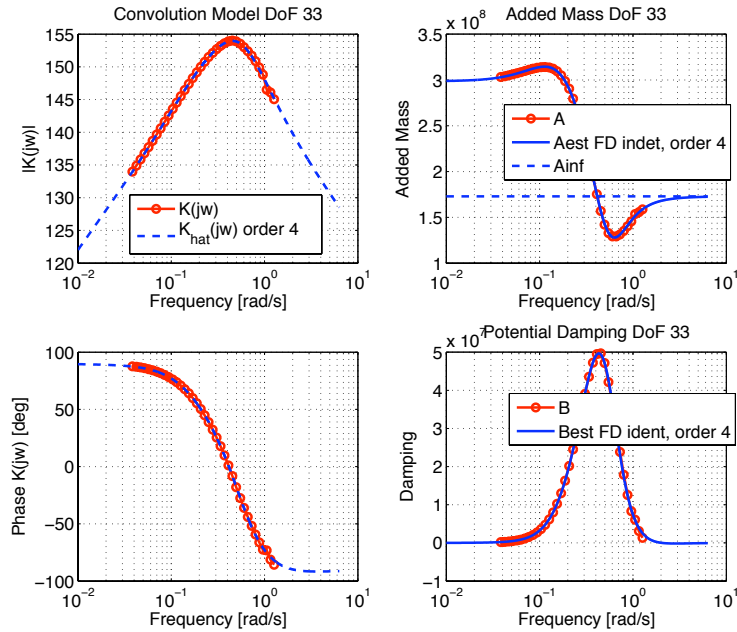


Figure 6: Identification results for the coupling 3-3 (heave-heave) using information of the infinite-frequency added mass. The left-hand-side plots show the fluid-memory frequency response data and the response of the identified model. The right-hand-side plots show the added mass and potential damping and their re-construction based the estimated model.

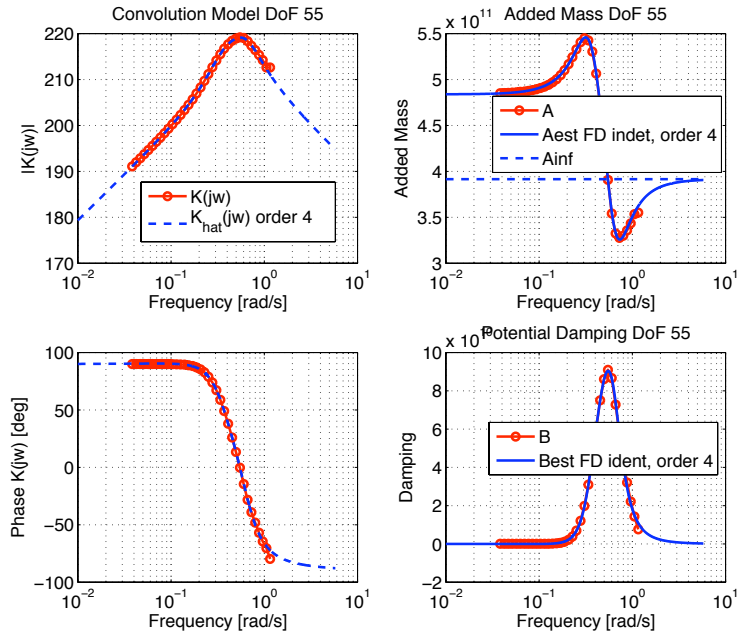


Figure 7: Identification results for the coupling 5-5 (pitch-pitch) using information of the infinite-frequency added mass. The left-hand-side plots show the fluid-memory frequency response data and the response of the identified model. The right-hand-side plots show the added mass and potential damping and their re-contruction based on the estimated model.

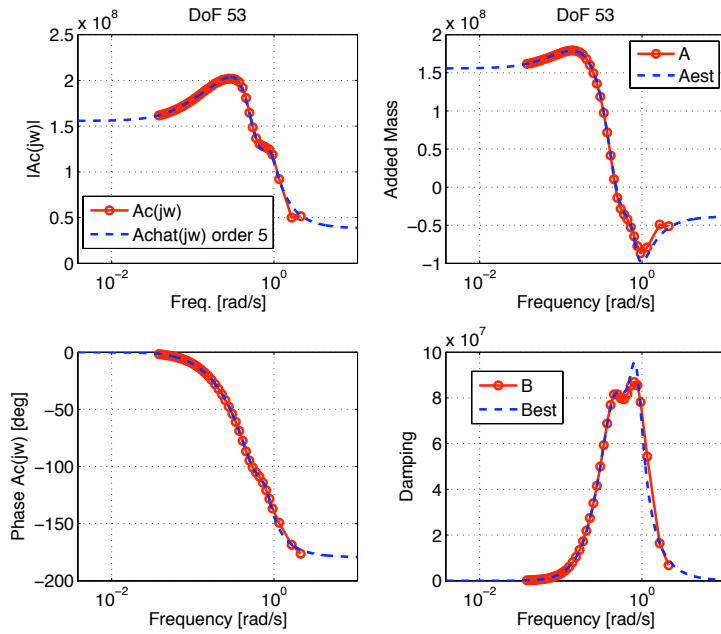


Figure 8: Identification results for the coupling 5-3 (pitch-heave) without using information of the infinite-frequency added mass. The left-hand-side plots show the complex coefficient $\tilde{A}(j\omega)$ data and the response of the identified model. The right-hand-side plots show the added mass and potential damping and their re-contruction based on the estimated model.

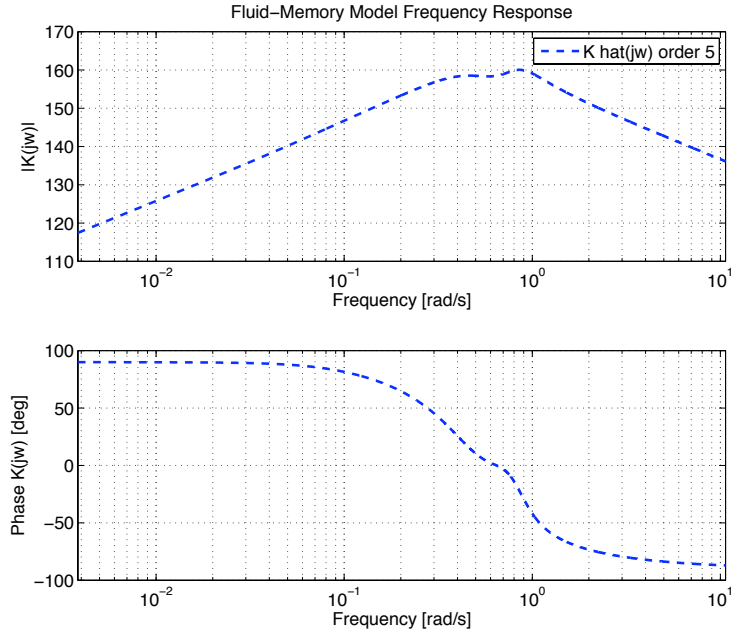


Figure 9: Frequency response of the identified fluid-memory model for the coupling 5-3 (pitch-heave) without using information of the infinite-frequency added mass.

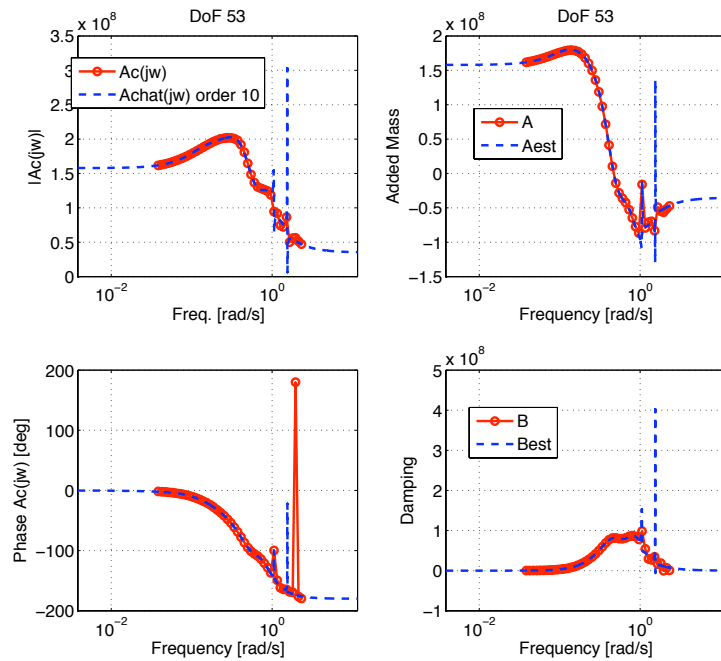


Figure 10: Identification results for the coupling 5-3 (pitch-heave) without using information of the infinite-frequency added mass and without eliminating wild points. The left-hand-side plots show the complex coefficient $\hat{A}(j\omega)$ data and the response of the identified model. The right-hand-side plots show the added mass and potential damping and their re-construction based on the estimated model.

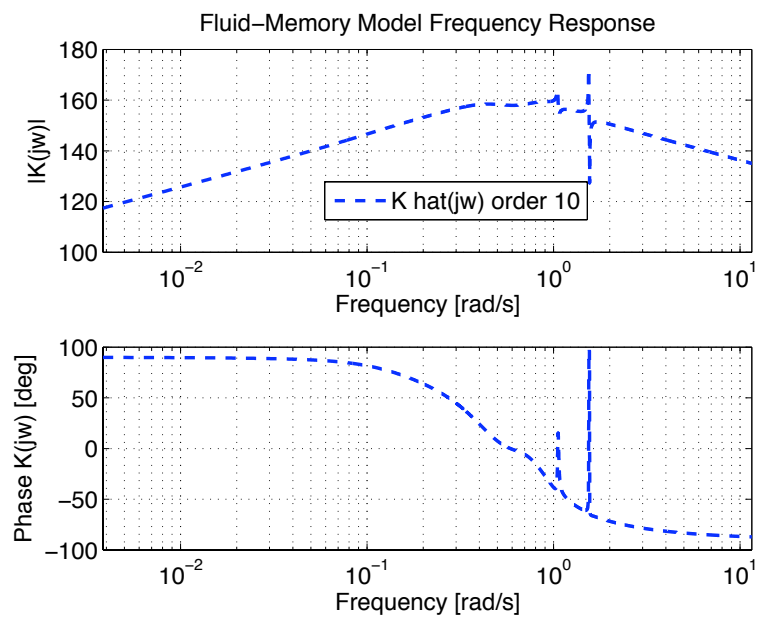


Figure 11: Frequency response of the identified fluid-memory model for the coupling 5-3 (pitch-heave) without using information of the infinite-frequency added mass and without eliminating wild points.